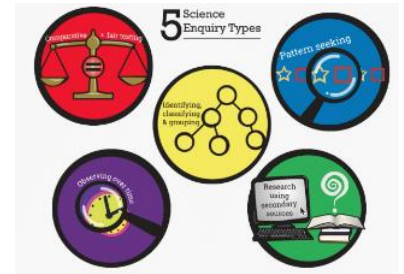


Year 1

Summer term

Plants



Prior knowledge learned in EYFS:

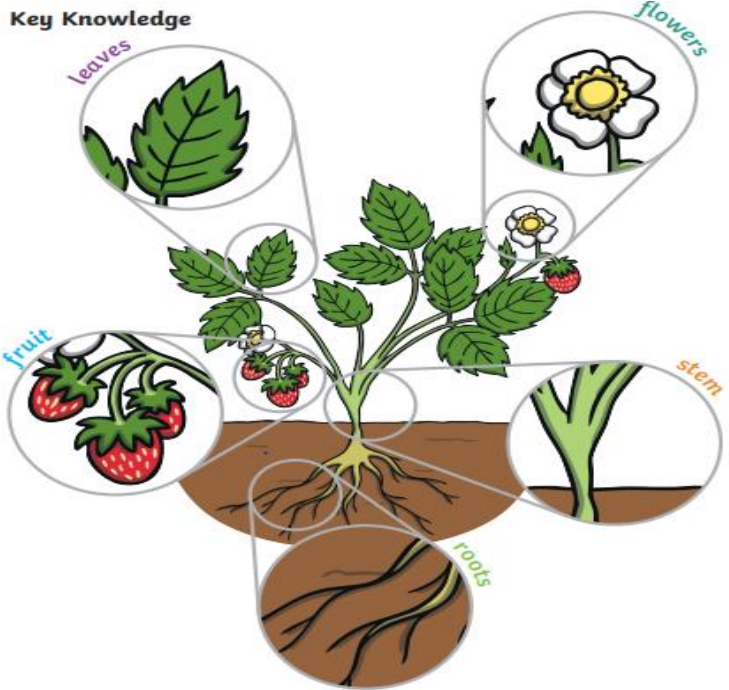
Prior knowledge learned in EYFS: Explore the natural world around them, making observations and drawing pictures of plants.

new learning

National Curriculum for year 1

identify and name a variety of common wild and garden plants, including deciduous and evergreen trees

identify and describe the basic structure of a variety of common flowering plants, including trees



Key vocabulary

Deciduous, Evergreen trees,

Leaves, Flowers (blossom),

Petals, Fruit, Roots, Bulb, Seed,

Trees



Suggested texts

Plant life

Let's grow!

Scientists

Beatrix Potter Author & Botanist

Can you identify
and name
different trees?

Can you identify
parts of a plant?

Can you identify
parts of a tree?

Can you
describe the
difference
between

Deciduous Trees

Oak

Maple

Sycamore

Horse Chestnut

Elm

Beech

Yew

Pine

Fir

Hemlock

Blue Spruce

Holly

Evergreen Trees